



**Istituto per la Protezione delle  
Piante (IPP) (CNR) - Sezione di  
Portici**

**Un nuovo lepidottero  
segnalato in Italia**

***Tuta absoluta* (Meyrick)**

**Regione Campania**

**Napoli, 6 febbraio 2009**



**Istituto per la Protezione delle Piante  
(IPP) (CNR) Sezione di Portici  
Via Università, 133**

**Umberto Bernardo  
Ricercatore**

# Inquadramento sistematico

*Tuta absoluta* (Meyrick)

**Nome comune:**

**Fillominatrice del pomodoro**

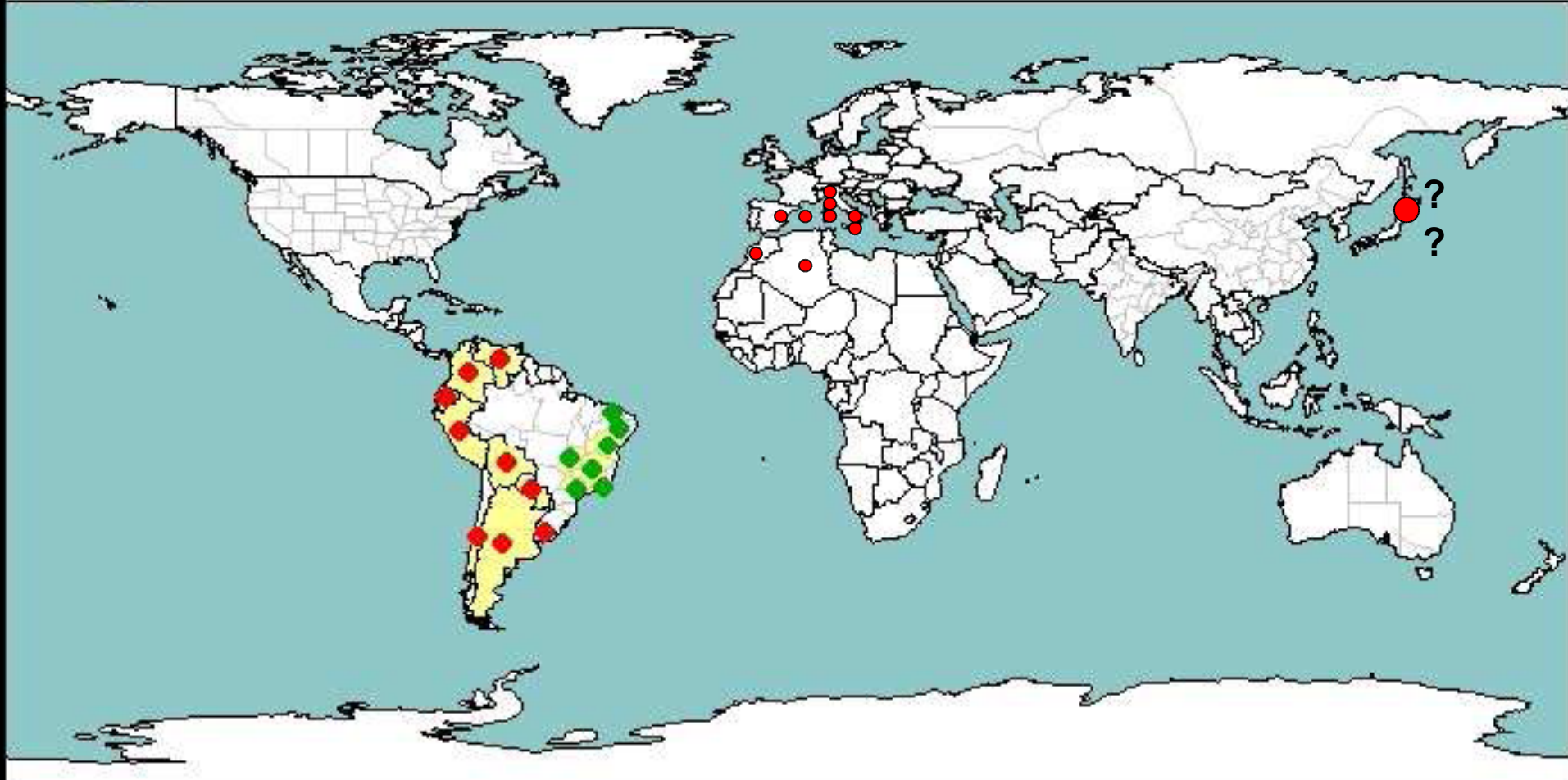
**Ordine: Lepidoptera**

**Famiglia: Gelechidae**





# Tuta absoluta



National record



Present



Present only in some areas

Subnational record



Present



Present only in some areas





*Keiferia lycopersicella*

(Walsingham)



Foto: [mothphotographersgroup.msstate.edu/Files/Sang](http://mothphotographersgroup.msstate.edu/Files/Sang)

*Tuta absoluta* (Meyrick)



*Phthorimaea operculella*

(Zeller)



Foto: [www2.nrm.se/.../p/phthorimaea\\_operculella.html](http://www2.nrm.se/.../p/phthorimaea_operculella.html)

# *Keiferia lycopersicella* (Walsingham)

**Morfologicamente molto simile**

**Adulto:** distinguibile mediante l'esame delle armature genitali maschili (presenza di un processo uncinato all'interno dell'espansione apicale).

**Presenza macule nerice ai 2/5-3/5 dell'ala anteriore**

**Larva:** presenza 3 setole paraspicolari protoraciche su uno sclerite ben definito

**Biologia:** Minor numero di cicli per anno





*Tuta absoluta*

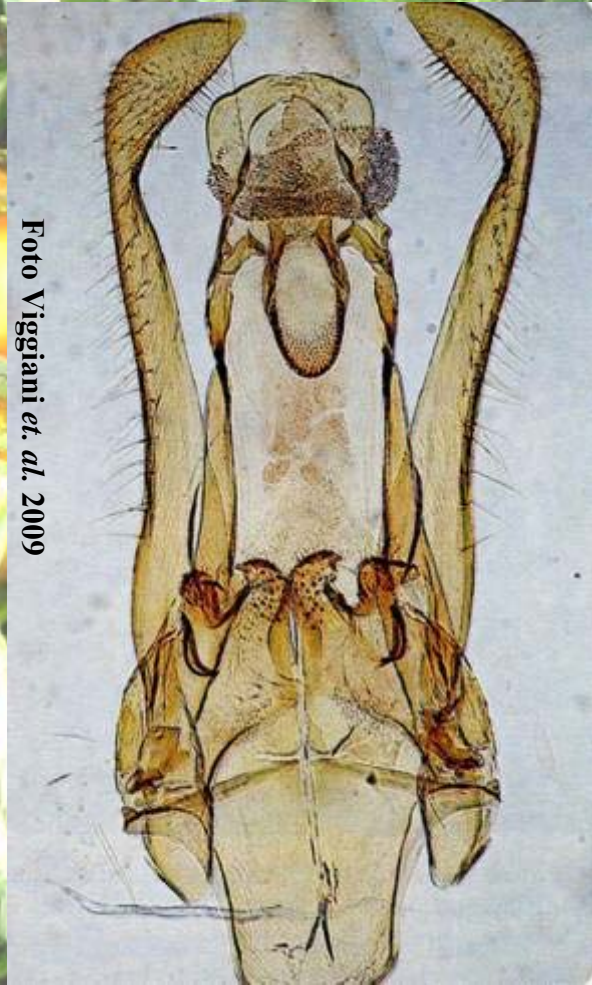


Foto Viggiani et. al. 2009

*Phthorimea operculella*



# Ciclo biologico

Specie polivoltina, omodinama



Polifaga su solanacee

•Coltivate: pomodoro, patata, peperone, melanzana.

•Spontanee: *Datura stramonium*, *D. ferox*,  
*Lycium chilense*, *Lycopersicon hirsutum*,  
*Nicotiana glauca*, *Solanum lyratum*, *S.*  
*puberulum*, *S. niger*.





Foto Viggiani *et al.* 2009





# Lunghezza del ciclo







	Uova	Larva	Crisalide	Adulto	Ciclo in giorni
					 
30°C	4	11	5	9	20
15°C	10	36	20	23	66







Foto Rusell IPM Ltd



Foto Rusell IPM Ltd

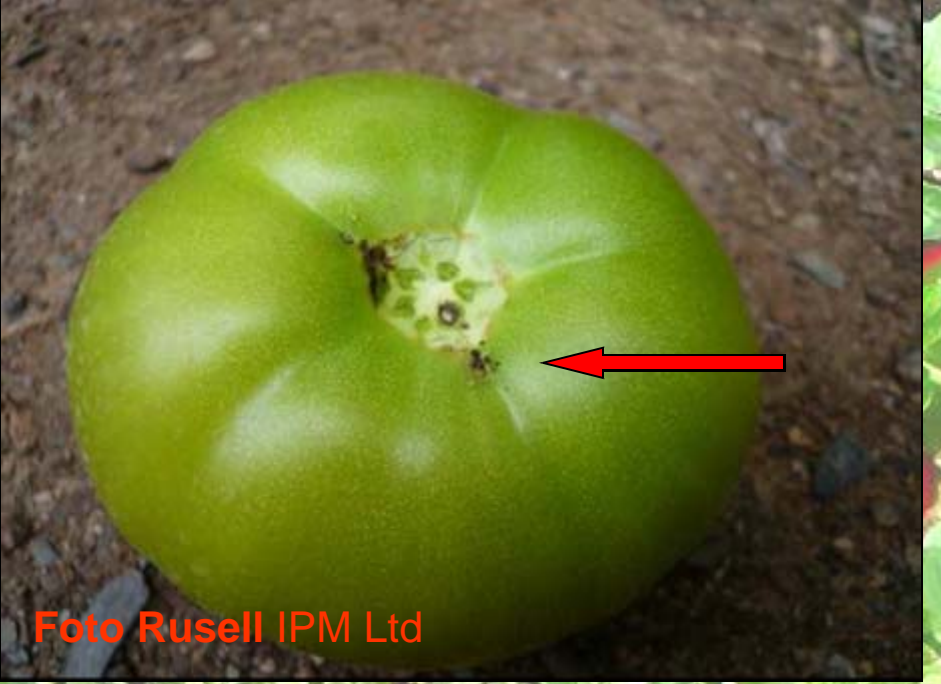


Foto Rusell IPM Ltd



Foto Rusell IPM Ltd



Foto Rusell IPM Ltd



Foto Rusell IPM Ltd

**Danni su patata**



# Parassitoidi

**Braconidae: *Bracon*, *Chelonus*, *Orgilus* e *Pseudapanteles dignus***

**Bethylidae: *Goniozus nigrifemur* (larvale)**

**Chalcidoidea: *Conura*, *Copidosoma*, *Galeopsomya*  
*Trichogramma pretiosum* (8,6%); *Trichogramma*  
spp.**

*Trichogramma* sp.



*Bracon* sp.

*Conura* sp.



*Pseudapanteles dignus*



Foto: Mitidieri e Polack 2005



# Predatori

**Pentatomidae: *Podisus nigrispinus***

**Miridae: *Nesidiocoris tenuis*; *Macrolophus melanotoma*, *M. pygmaeus***

**Anthocoridae: *Xylocoris* sp.: preda le uova  
5% (Brasile)**

**Coccinellidae: *Cycloneda sanguinea* larvale**

*Macrolophus melanotoma*

*Nesidiocoris tenuis*

Foto:

Podis

ea



Foto: [www.sesilipm.co.kr/en/](http://www.sesilipm.co.kr/en/)

Foto: Leo Diavo

[www.flickr.com](http://www.flickr.com)

# Bibliografia

- Barrientos Z.R., Apablaza H.J., Norero S.A., Estay P.P. 1998. Temperatura base y constante termica de desarrollo de la polilla del tomate, *Tuta absoluta* (Lepidoptera: Gelechiidae). *Cienc. Invest. Agraria* 25, 133-137.
- Garzia G., Torres J.B., Fernandes A.V., Picanço M.C., Siscaro G., Colombo A., Campo G. 2008. Parasitism of *Tuta absoluta* (Lepidoptera: Gelechiidae) on tomato plants by *Trichogramma pretiosum* Riley in response to host density and plant structures. *Cienc. Rural*, Santa Maria, 38: 1504-1509.
- Garzia G., Siscaro G., Colombo A., Campo G. 2009. Rinvenuta in Sicilia *Tuta absoluta*. *L'inf. Agr.*, 4: 71.
- Lietti M.M.M., Botto E., Alzogaray R.A. 2005. Insecticide Resistance in Argentine Populations of *Tuta absoluta* (Meyrick) (Lepidoptera: Gelechiidae). *Neotropical Entomology* 34: 112-119.
- Miranda M.M.M., Picanço M.C., Zanuncio J.C., Guedes R.N.C. 1998. Ecological life table of *Tuta absoluta* (Meyrick) (Lepidoptera: Gelechiidae). *Biocontrol Sci. Technol.* 8: 597-606.
- Oepp/Epob. 2005. *Data sheets on quarantine pests*. *Tuta absoluta*. Bulletin Oepp/Epob, 35: 43-45.
- Picanço M.C., Silva D.J.H., Lôbo A.P., Leite G.L.D. 1996. Adição de óleo mineral a inseticidas no controle de *Tuta absoluta* (Meyrick) (Lepidoptera: Gelechiidae) e *Helicoverpa zea* (Bod.) (Lepidoptera: Noctuidae) em tomateiro. *Anais da Sociedade Entomológica do Brasil*, 23: 97-100.
- Pratioli D., Parra J.R.P. 2000. Fertility life table of *Trichogramma pretiosum* (Hym., Trichogrammatidae) in eggs of *Tuta absoluta* and *Phthorimaea operculella* (Lep. (Gelechiidae)) at different temperatures. *J. Appl. Ent.* 124: 339-342.
- Sannino L., Espinosa B. 2009. *Keiferia lycopersicella*, una nuova tignola su pomodoro. *L'inf. Agr.*, 4: 69-70.
- Torres J.B., Evangelista W.S., Barros J.R., Guedes R.N.C. 2003. Dispersal of *Podisus nigrispinus* (Het., Pentatomidae) nymphs preying on tomato leaf miner: Effect of predator release time, density and location level. *J. Appl. Ent.* 124: 320-327.
- Urbaneja A., Monto H., Mella O. 2009. Suitability of the tomato borer *Tuta absoluta* as prey for *Macrolophus pygmaeus* and *Nesitocoris tenuis*. *J. Appl. Ent.* In press.
- Vigiani G., Filella F., Delrio G., Ramassini W., Foxi C. 2009. *Tuta absoluta*, nuovo lepidottero segnalato anche in Italia. *L'informatore Agrario*, 4: 66-68.
- Vivan L.M., Torres J.B., Veiga A.F.S.L. 2003. Development and reproduction of a predatory stinkbug, *Podisus nigrispinus*, in relation to two efficient prey types and environmental conditions *BioControl* 48: 155-168.



**Grazie per l'attenzione**

